



**P&G** ClassicVue Max™

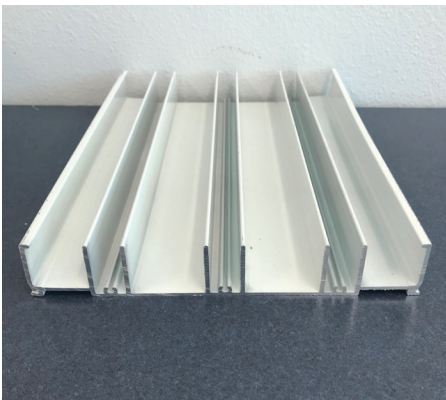
**P&G** WinGuard®  
ALUMINUM

SGD680 / SGD780

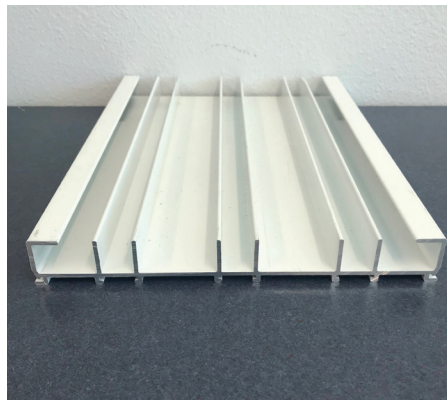
This reference guide is to help identify parts and ordering options

*Parts that can only be ordered by unit size are marked accordingly*

## FRAME PARTS



Frame head (3-track shown)  
*(ordered by unit size or 12" sample)*

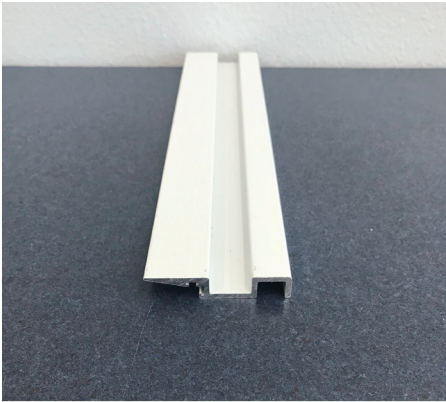


Frame jamb (3-track shown)  
*(ordered by unit size or 12" sample)*

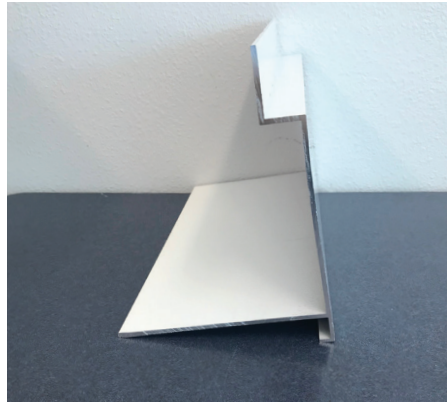


Track (3-track shown)  
*(ordered by unit size or 12" sample)*

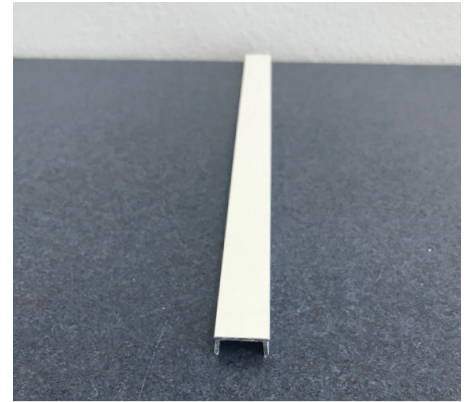




**P-hook**  
*(ordered by unit size or 12" sample)*



**P-hook mount**  
*(ordered by unit size or 12" sample)*



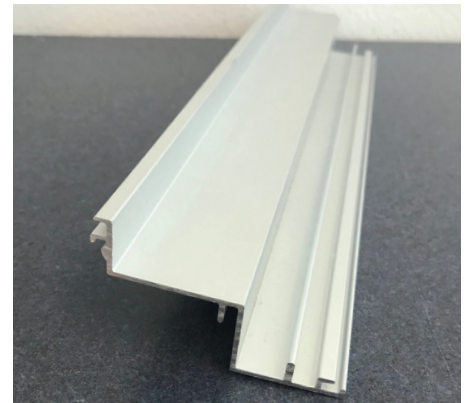
**P-hook cover**  
*(ordered by unit size or actual cut size)*



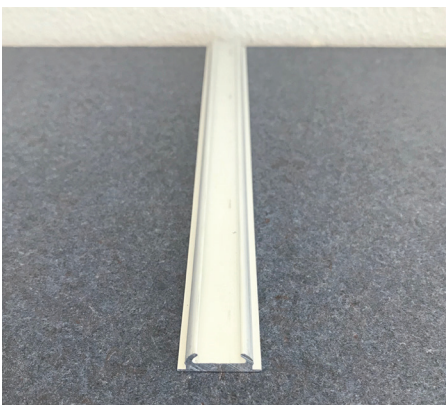
**Interior/Exterior sill cover**  
*(ordered by unit size or 12" sample)*



**Mid sill cover**  
*(ordered by unit size or 12" sample)*



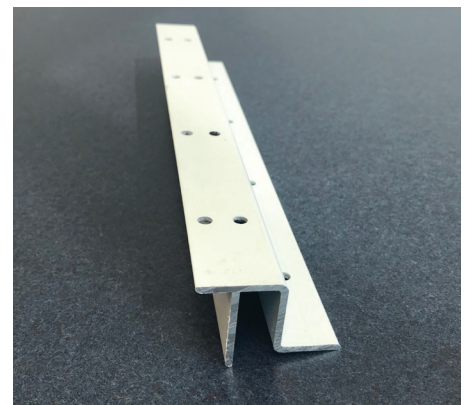
**Exterior cover w/screen track**  
*(ordered by unit size or 12" sample)*



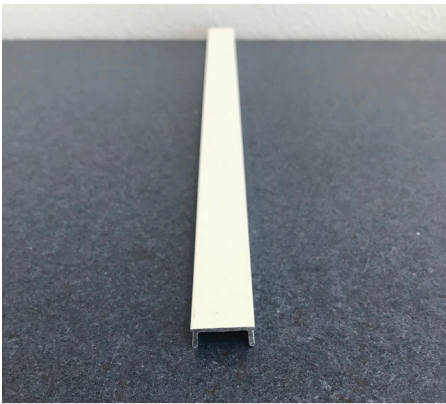
**Anchor plate**  
*(ordered by unit size or 12" sample)*



**Riser 1.875" - 5.25"**  
*(ordered by unit size or 12" sample)*

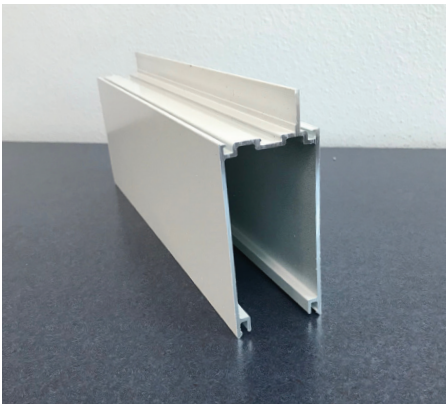


**Fixed "O" panel bracket**  
*(ordered by actual part)*

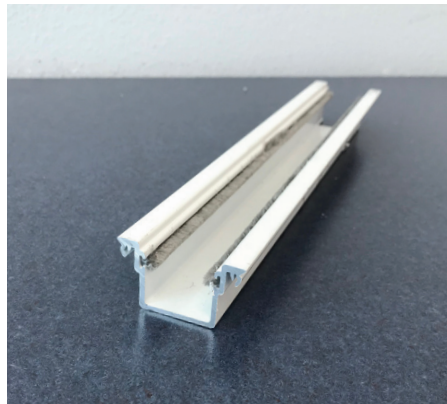


Head and jamb screw cover  
*(ordered by actual cut size)*

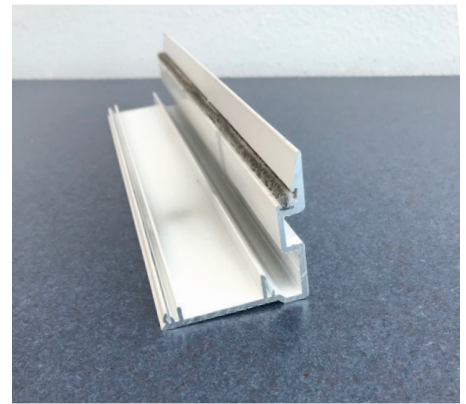
## PANEL PARTS



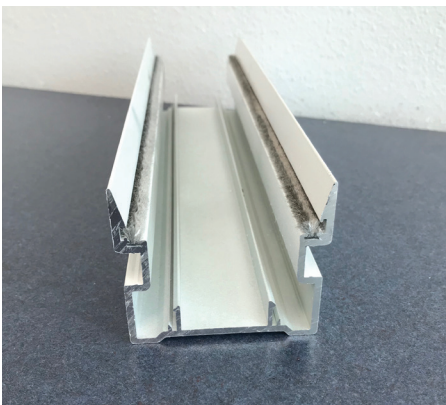
Stile  
*(ordered by unit size or actual cut size)*



Stile Adapter  
*(ordered by unit size or actual cut size)*



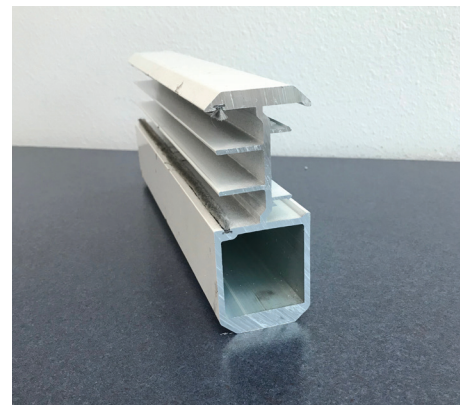
Interlock adapter  
*(ordered by unit size or 12" sample)*



Double interlock adapter  
*(ordered by unit size or 12" sample)*

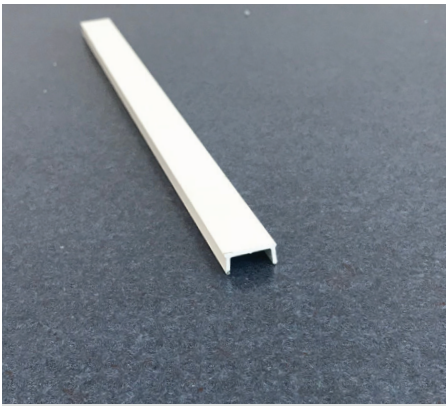


Interlock screw cover  
*(ordered by unit size or 12" sample)*

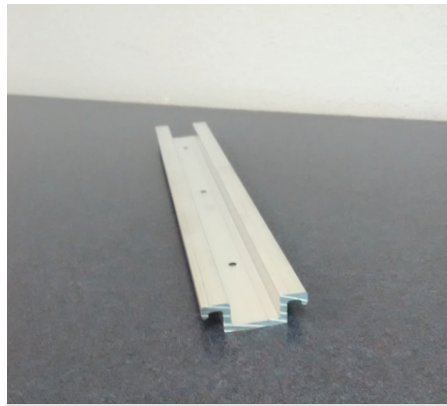


Astragal  
*(ordered by unit size or 12" sample)*

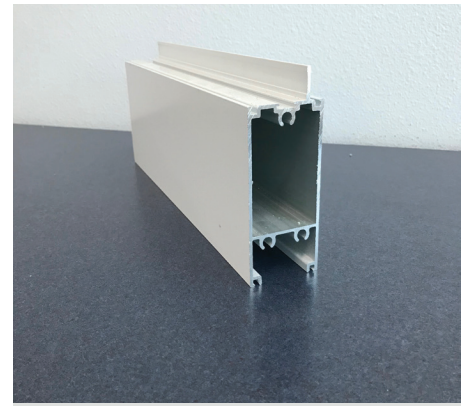




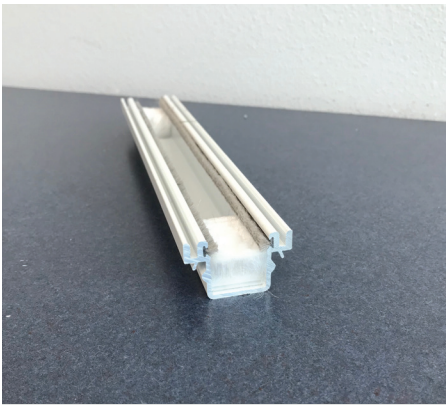
**Astragal screw cover**  
*(ordered by unit size or 12" sample)*



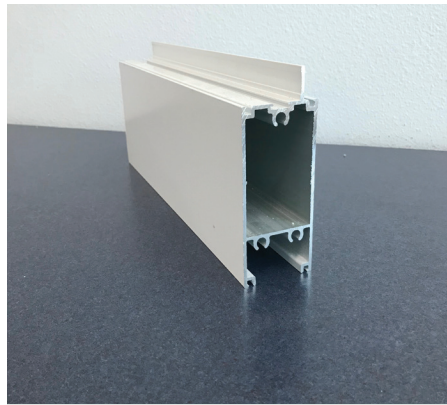
**Astragal back up plate**  
*(order by actual part)*



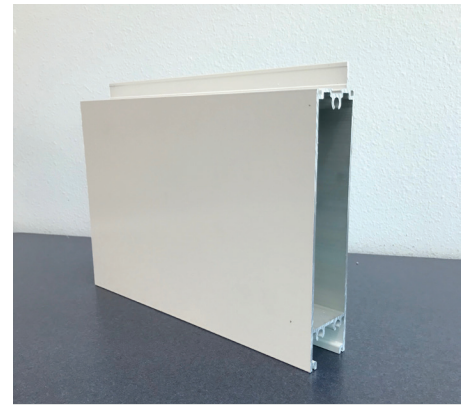
**Top rail**  
*(ordered by unit size or 12" sample)*



**Top / bottom snap rail adapter**  
*(ordered by unit size or actual cut size)*



**4" Bottom rail (default)**  
*(ordered by unit size or 12" sample)*



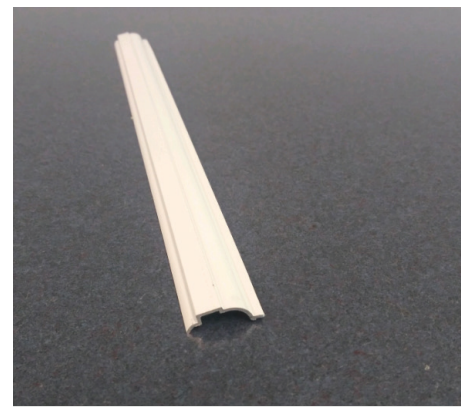
**9" Bottom rail (optional)**  
*(ordered by unit size or 12" sample)*



**Exterior ogee bead - mono**  
*(ordered by unit size or 12" sample)*

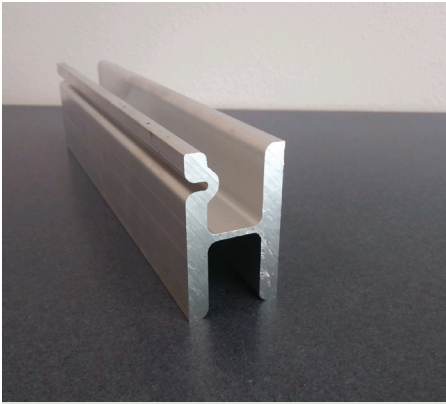


**Exterior ogee bead - insulating**  
*(ordered by unit size or 12" sample)*

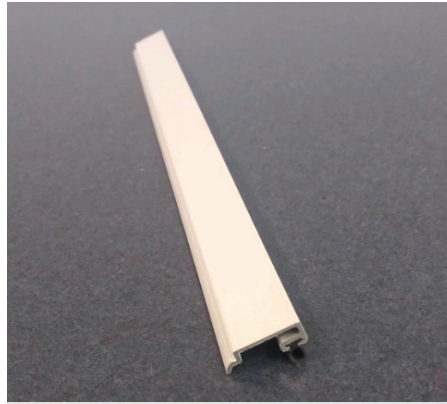


**Interior ogee bead**  
*(ordered by unit size or 12" sample)*

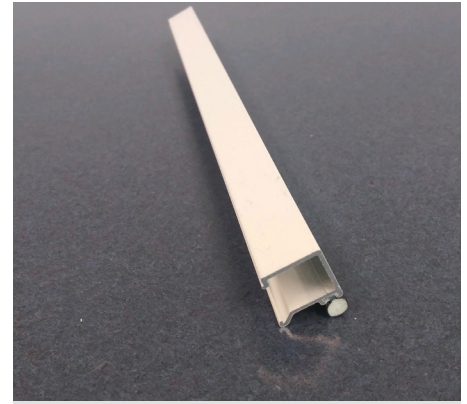




**Reinforcement**  
*(ordered by unit size or 12" sample)*

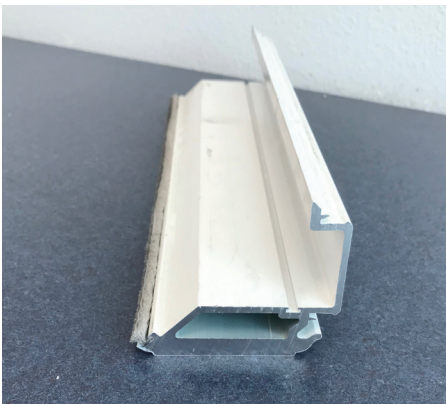


**Interior/exterior square bead – insulating**  
*(ordered by unit size or 12" sample)*

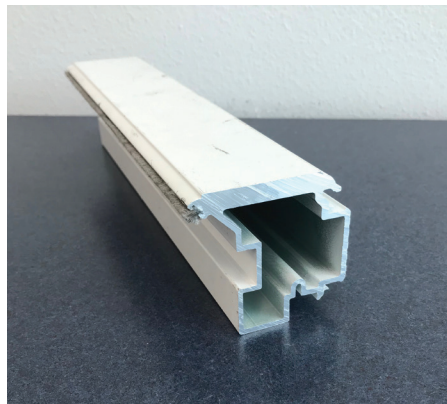


**Exterior square bead - mono**  
*(ordered by unit size or 12" sample)*

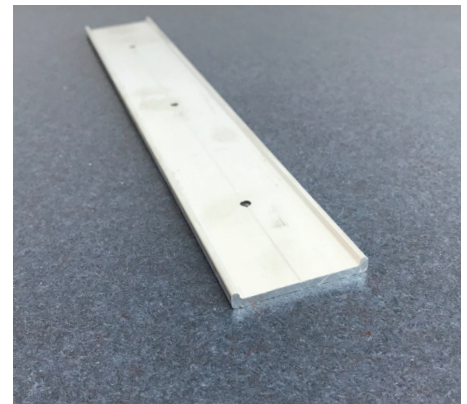
## 90° CORNER PARTS



**Astragal - locking**  
*(ordered by unit size or 12" sample)*



**Astragal receiver**  
*(ordered by unit size or 12" sample)*



**Astragal back up plate - 90° corner door**  
*(ordered by actual part)*



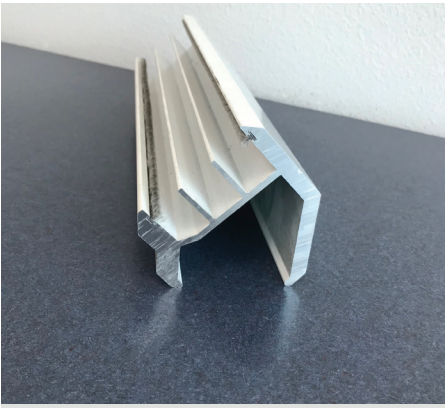
**Gemini mortise keeper - 90° corner door**  
*(ordered by actual part)*



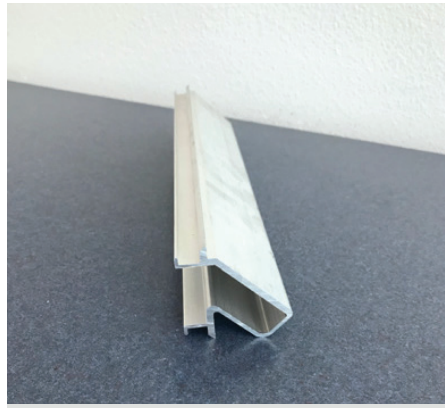
**Gemini dual-point lock for corner door (90°)**  
*(ordered by actual part)*



## 135° CORNER PARTS



Astragal receiver  
*(ordered by unit size or 12" sample)*



Astragal receiver mount  
*(ordered by unit size or 12" sample)*

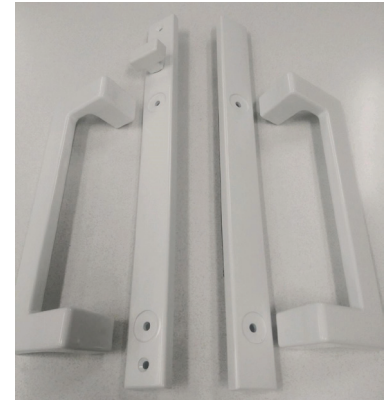
## MISCELLANEOUS PARTS



Curved handle set  
*(active non-keyed)*



Curved handle set  
*(active-keyed)*



Contemporary handle set



Secondary thumb turn  
*(ordered by actual part)*



Gemini mortise keeper  
*(ordered by actual part)*

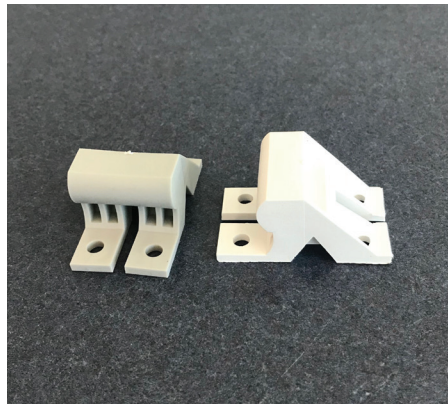


Keeper shim  
*(ordered by actual part)*





**Bumper**  
*(ordered by actual part)*



**4-hole bumper stop**  
*(ordered by actual part)*



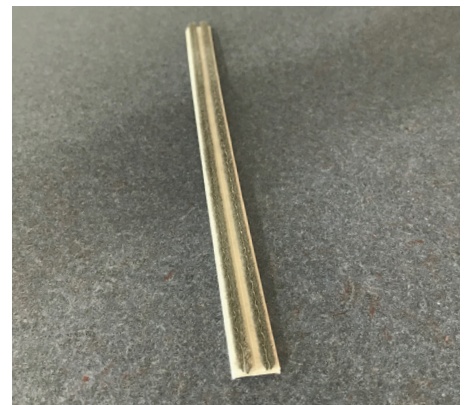
**Sill plug**  
*(ordered by actual part)*



**Open cell foam pad**  
*(ordered by actual part)*



**Gemini mortise dual-point lock**  
*(ordered by actual part)*



**Sill end w/s pad**  
*(ordered by actual part)*



**Come along**  
*(ordered by actual part)*



**Roller adjustment hole plug**  
*(ordered by actual part)*



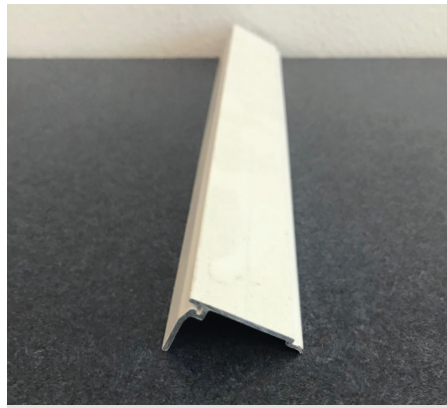
**Tandem rollers-nylon & stainless steel**  
*(ordered by actual part)*



## BOX SCREEN PARTS



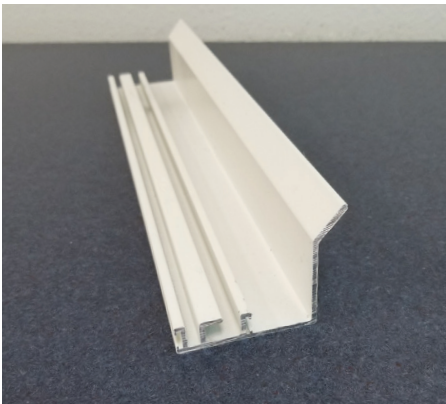
**Keeper**  
*(ordered by actual part)*



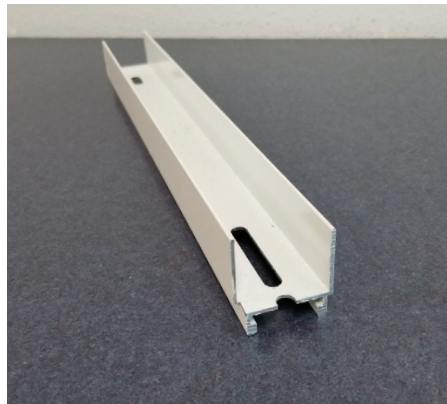
**Head & jamb add-on**  
*(ordered by unit size or 12" sample)*



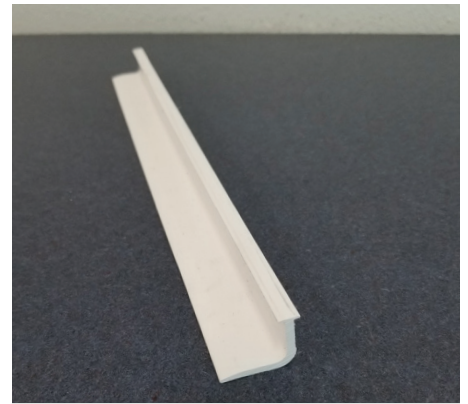
**Box screen sill end rail**  
*(ordered by unit size or 12" sample)*



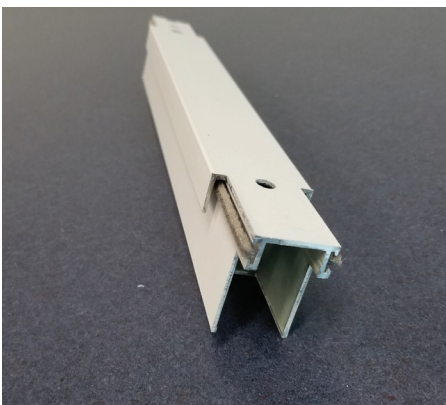
**OXO Adapter**  
*(ordered by unit size or 12" sample)*



**Astragal**  
*(ordered by unit size or 12" sample)*



**Interlock adapter**  
*(ordered by unit size or 12" sample)*



**Double interlock**  
*(ordered by unit size or 12" sample)*

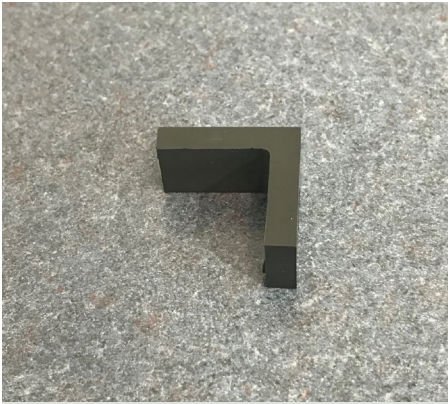


**Latch spacer set**  
*(ordered by actual part)*

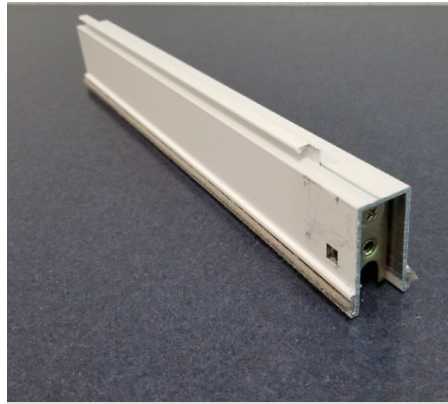


**Roller**  
*(ordered by actual part)*

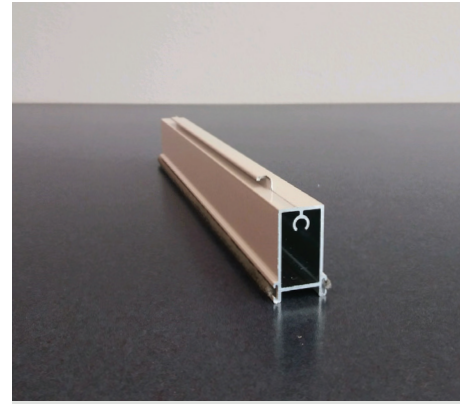




**Screen stop**  
*(ordered by actual part)*



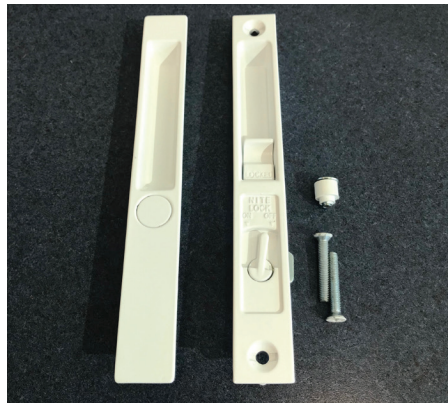
**Bottom rail**  
*(ordered by unit size or 12" sample)*



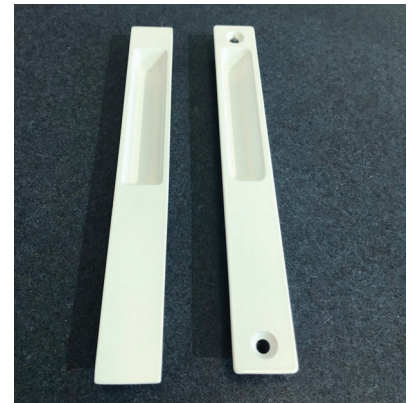
**Top rail**  
*(ordered by unit size or 12" sample)*



**Stile**  
*(order by unit size or 12" sample size)*



**Box Screen Pull**  
*(ordered by actual part)*



**Dummy Pull**  
*(ordered by actual part)*



# MAIN FRAME EXPLODED VIEW

## FRAME ASSEMBLY

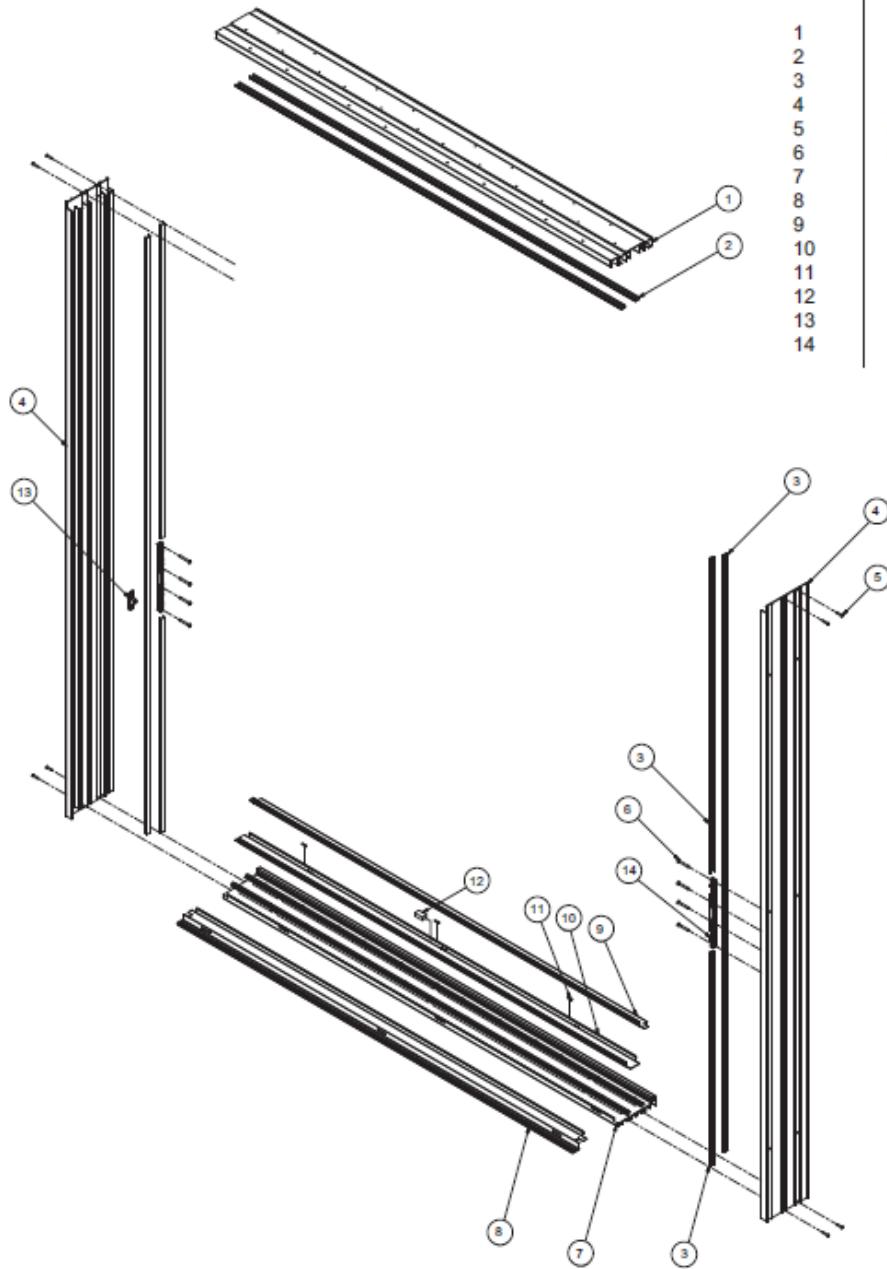
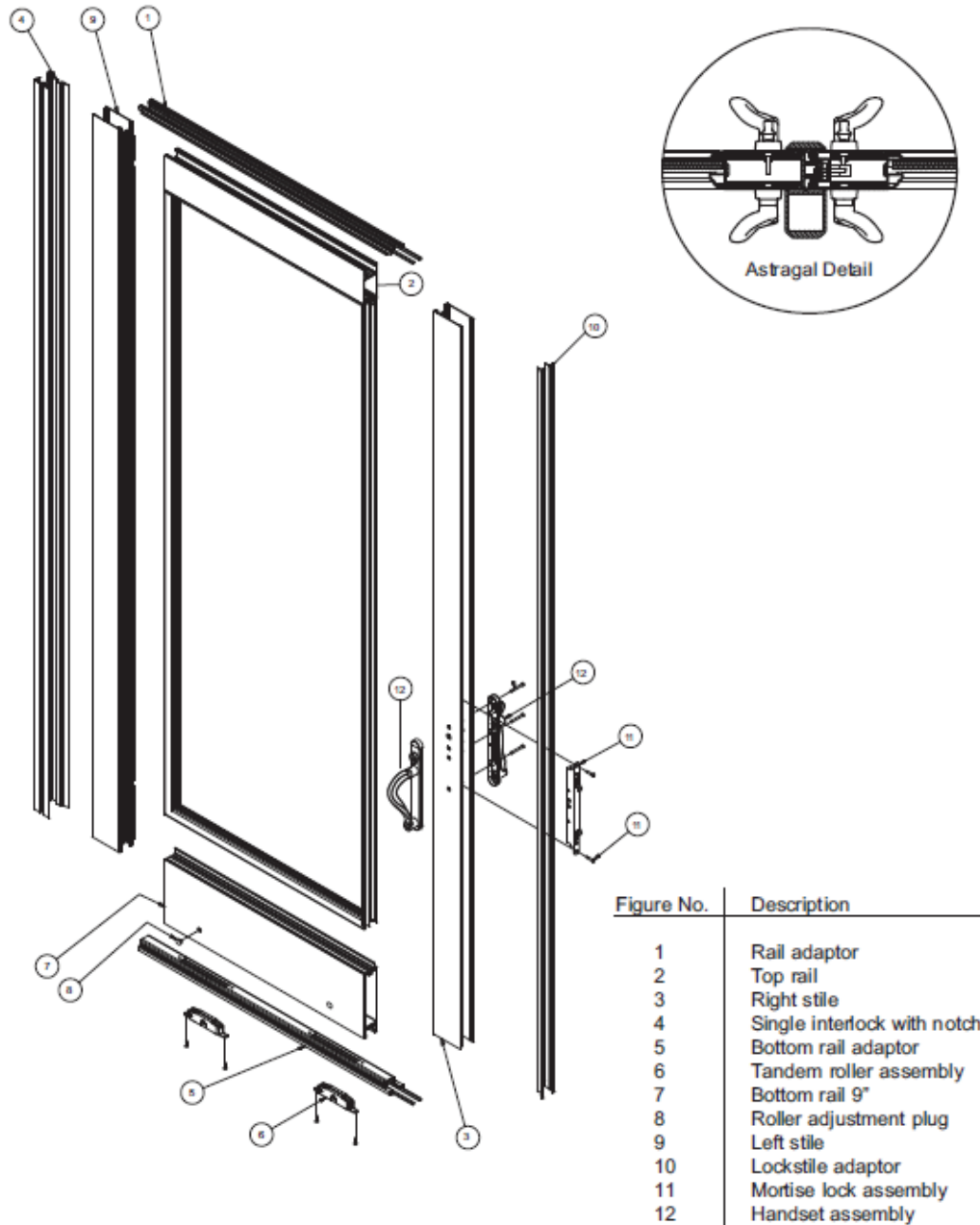


Figure No.	Description
1	2 Track head with screen
2	Head trim cover
3	Screw trim cover
4	2 Track jamb with screen
5	#8 x 1" large quad pn. sms
6	#10 x 2 1/2" lg. ph. pn. ss.
7	2 Track sill base
8	External screen sill cover
9	Internal/external sill cover
10	Mid sill cover
11	Open cell foam pad
12	Dust pad
13	Screen keeper
14	Mortise lock keeper



# PANEL EXPLODED VIEW

## PANEL ASSEMBLY





# BOX SCREEN EXPLODED VIEW

## SCREEN ASSEMBLY

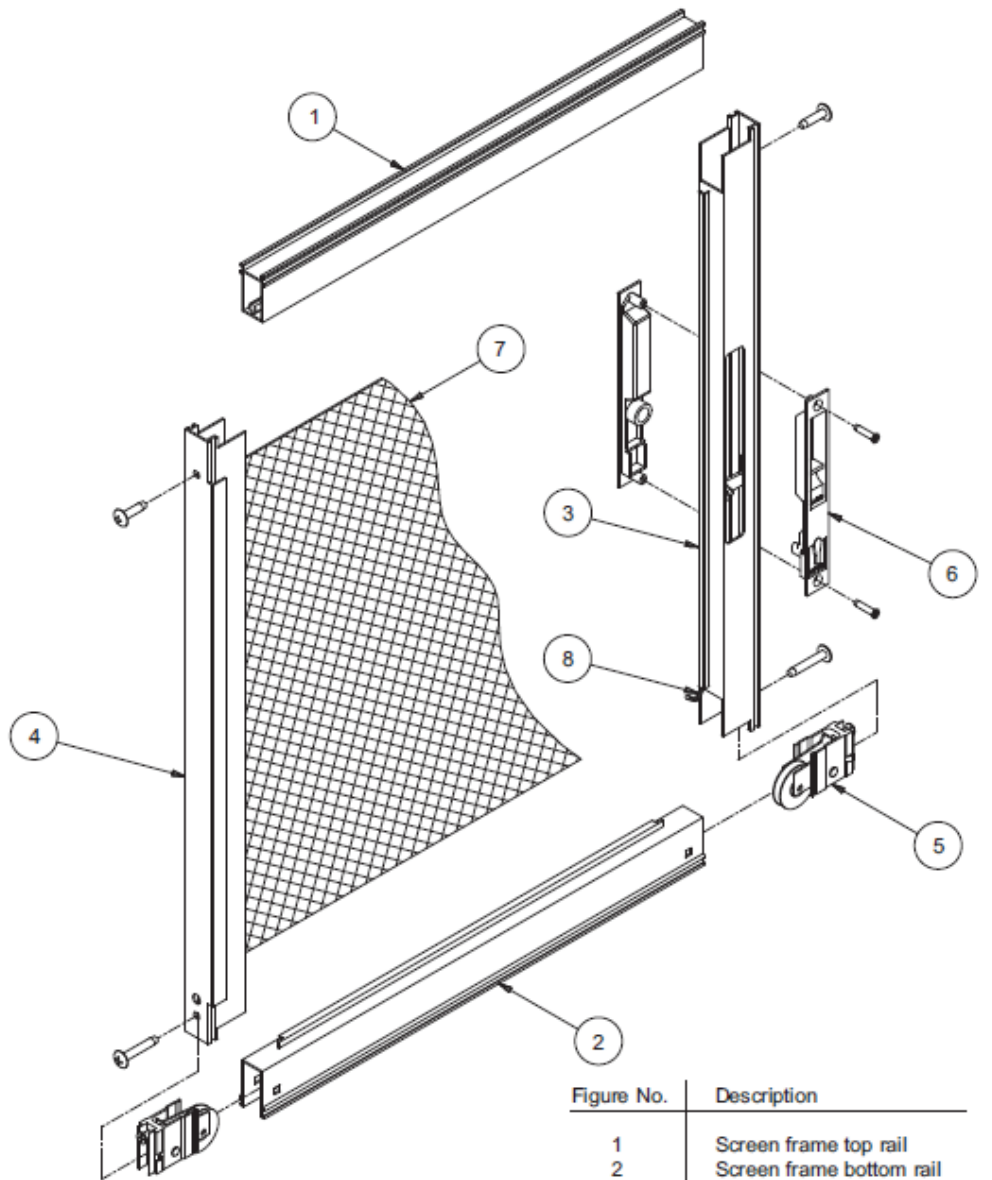


Figure No.	Description
1	Screen frame top rail
2	Screen frame bottom rail
3	Screen frame side rail
4	Screen frame meeting rail
5	Single rollers (standard or s.s.)
6	Interior/exterior panel pull
7	Screen cloth, 1816 mesh
8	Screen spline

# MAIN FRAME TRACKS

- All panel tracks are one piece
- Minimum is 2-tracks and maximum is 4-tracks

Track / Riser Types	Box Riser
Two Track	
Two Track w/ Integral Box Screen Rail	
Three Track	
Three Track w/ One Box Screen Rail	

Track / Riser Types	Box Riser
Three Track w/ Two Box Screen Rails	
Four Track	
Four Track w/ One Box Screen Rail	
Four Track w/ Three Box Screen Rails	